

Requiem: Offertorium

Rex Potam

andante *ff*

Sol. Do - mi-ne, Je - su Chris - te, Rex glo - ri-æ, Rex glo - ri - æ,
Ct. Do - mi-ne, Je - su Chris - te, Rex glo - ri-æ, Rex glo - ri - æ,
Bar. Do - mi-ne, Je - su Chris - te, Rex glo - ri-æ, Rex glo - ri - æ,
B. Do - mi-ne, Je - su Chris - te, Rex glo - ri-æ, Rex glo - ri - æ,
Ob.
Vc.

9 *f*

Sol. li - be-ra a - ni-mas om - ni - um fi - de - li - um de-
Ct. li - be - ra a - ni-mas om - ni - um fi - de - li - um
Bar. li - be - ra a - ni-mas om - ni - um fi - de - li - um
B. li - be - ra a - ni-mas om - ni - um fi - de - li - um
Ob.
Vc.

16 *p*

Sol. - func - to - rum de pœ - nis

Ct. de - func - to - rum de pœ - nis, de pœ - nis

Bar. de - func - to - rum de pœ - nis, de pœ - nis

B. de - func - to - rum de pœ - nis, de pœ - nis

Ob. *p subito*

Vc.

23 *sfz*

Sol. in - fer - ni et

Ct. in - fer - ni et

Bar. in - fer - ni et

B. in - fer - ni et

Ob. *sfz*

Vc.

30 *p*

Sol. de pro - fun - do la - cu.

Ct. de pro - fun - do la - cu.

Bar. de pro - fun - do la - cu.

B. de pro - fun - do la - cu.

Ob. *p*

Vc.

38 *adagio*

Ob.

Vc.

mp

Pno.

44

Sol. *Li - be-ra e - as de o - re, de*

Ct. *Li - be-ra e - as*

Bar. *Li - be-ra e - as*

B. *Li - be-ra e - as*

Ob.

Vc.

Pno.

50

Sol. *o - re le - o - nis, ne ab - sor-be - at*

Ct. *de o - re le - o - nis, ne ab - sor-be at*

Bar. *de o - re le - o - nis, ne ab - sor-be-at*

B. *de o - re le - o - nis, ne ab - sor-be-*

Ob.

Vc.

Pno.

56

Sol. e - as tar - ta - rus, ne ca - dant in ob - scu - rum ;

Ct. e - as tar - ta - rus, ne ca - dant in ob - scu - rum ;

Bar. e - as tar - ta - rus, ne ca - dant in ob - scu -

B. - at e - as tar - ta - rus, ne ca - dant in ob - scu -

Ob.

Vc.

Pno.

62

Sol. sed si - gni - fer sanc - tus Mi - cha - el re - præ - sen - tet e -

Ct. sed si - gni - fer sanc - tus Mi - cha - el re - præ - sen -

Bar. - rum ; sed si - gni - fer sanc - tus Mi - cha - el re - præ - sen -

B. - rum ; sed si - gni - fer sanc - tus Mi - cha - el re - præ - sen -

Ob.

Vc.

Pno.

68

Sol. - as in lu - cem sanc - tam,

Ct. - tet e - as in lu - cem sanc - tam,

Bar. - tet e - as in lu - cem sanc - tam,

B. - tet e - as in lu - cem sanc - tam,

Ob.

Vc.

Pno.

74

Sol. Quam o - lim A - bra - hae pro - mi - si - sti et se - mi - ni

Ct. Quam o - lim A - bra - hae pro - mi - si - sti et se - mi - ni

Bar. Quam o - lim A - bra - hae pro - mi - si - sti et se - mi - ni

B. Quam o - lim A - bra - hae pro - mi - si - sti et se - mi - ni

83

Sol. e - jus.

Ct. e - jus.

Bar. e - jus.

B. e - jus.

andante

mp - poco a poco cresc. e stringendo il tempo

86

Pno.

Measures 86-93 of the piano part. The right hand has a melodic line with slurs and ties, while the left hand provides a harmonic accompaniment with chords and moving lines. The key signature has two flats and the time signature is 4/4.

94

Vc.

Pno.

Measures 94-101. The violin part (Vc.) features a melodic line with slurs and ties. The piano part (Pno.) continues with its accompaniment. The key signature has two flats and the time signature is 4/4.

102

Ob.

Vc.

Pno.

Measures 102-109. The oboe part (Ob.) has a melodic line with slurs and ties. The violin part (Vc.) continues with its melodic line. The piano part (Pno.) provides accompaniment. The key signature has two flats and the time signature is 4/4.

110

Ob.

Vc.

Pno.

lascia perdersi

Measures 110-117. The oboe part (Ob.) has a melodic line with slurs and ties. The violin part (Vc.) continues with its melodic line. The piano part (Pno.) provides accompaniment. The key signature has two flats and the time signature is 4/4. The instruction *lascia perdersi* is written above the oboe staff.

117 *adagio*

Ct. Hos - ti - as et pre - ces ti - bi, Do - mi - ne, lau - dis of -

Bar. Hos - ti - as et pre - ces ti - bi, Do - mi - ne, lau -

B. Hos - ti - as et pre - ces ti - bi, Do - mi - ne, lau -

Pno.

125

Sol. tu sus - ci - pe

Ct. - fe - ri - mus, of - fe - ri - mus;

Bar. - dis of - fe ri - mus;

B. - dis of - fe - ri - mus;

Vc.

Pno.

133

Sol. pro a - ni - ma - bus il - lis, qua - rum ho - di - e me - mo - ri - am fa - ci -

Ob.

Vc.

Pno.

141 *ff*

Sol. - mus. Do - mi - ne!

Ob.

Vc.

Pno.

lento
ff

149

Sol. Fac e - as, Do - mi - ne, de mor - te tran - si - re ad vi - tam.

Ct. Fac e - as, Do - mi - ne, de mor - te tran - si - re ad vi - tam.

Bar. Fac e - as, Do - mi - ne, de mor - te tran - si - re ad vi - tam.

B. Fac e - as, Do - mi - ne, de mor - te tran - si - re ad vi - tam.

Pno.

158

Sol. Quam o - lim A - bra - hae pro - mi - si - sti et se - mi - ni

Ct. Quam o - lim A - bra - hae pro - mi - si - sti et se - mi - ni

Bar. Quam o - lim A - bra - hae pro - mi - si - sti et se - mi - ni

B. Quam o - lim A - bra - hae pro - mi - si - sti et se - mi - ni

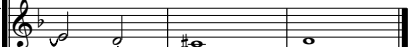
167

Sol.



e - jus.

Ct.



e - jus.

Bar.



e - jus.

B.



e - jus.